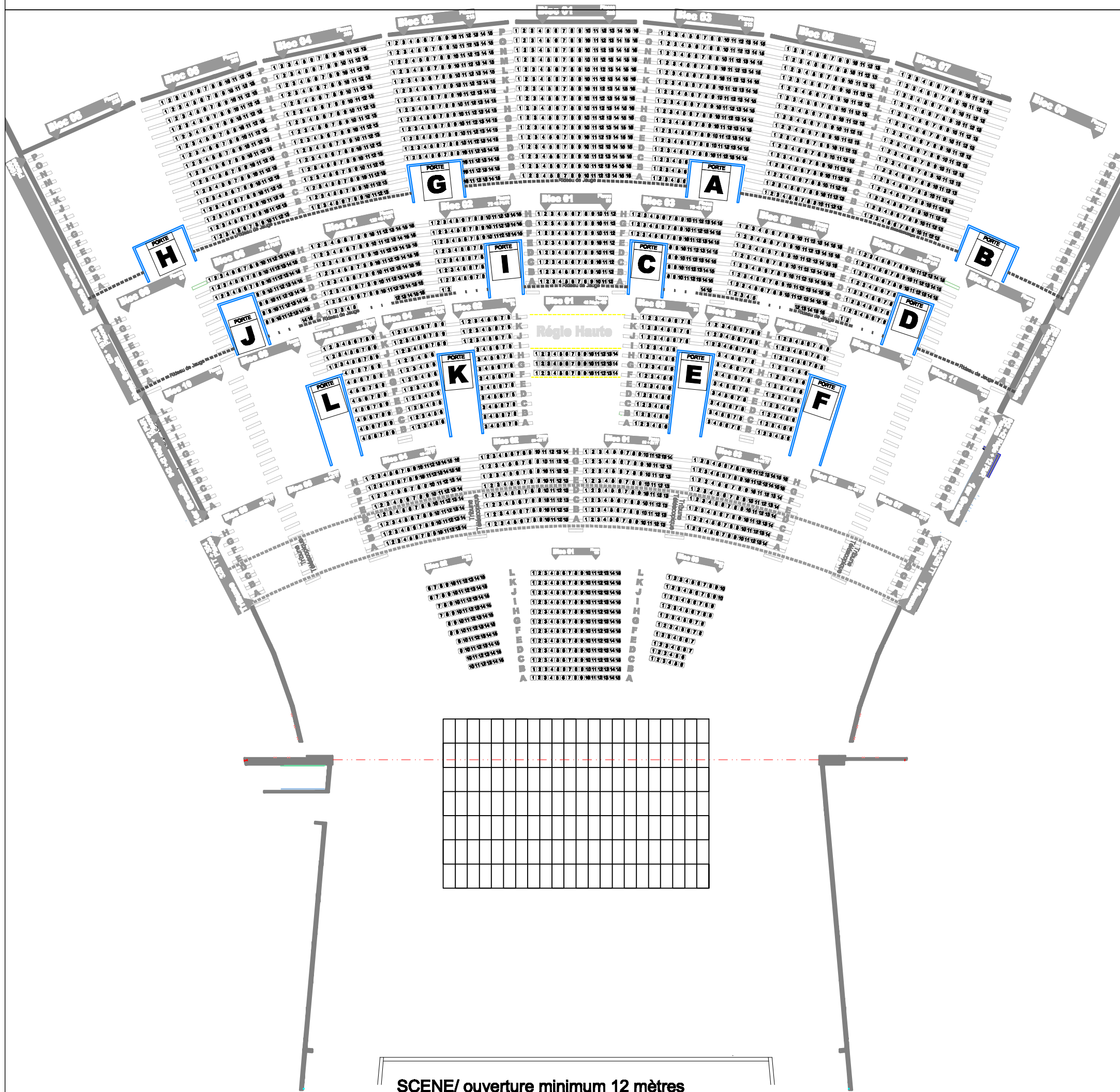


# CONFIGURATION / THEATRE 1



SCENE/ ouverture minimum 12 mètres

|  |                                  |
|--|----------------------------------|
| Parterre:  | 340 places                       |
| Tribune:   | 442 places                       |
| 1er gradin, blocs 2 à 7<br>+ bloc 1/ rangs F.G.H.: | 498 places                       |
| + 12 PMR   | 12 places                        |
| 2 ème gradin, blocs 1 à 7<br>+ 18 PMR              | 656 places                       |
|  | 18 places                        |
| 3 ème gradin, blocs 1 à 7                          | 1514 places                      |
| <b>Total commerciales<br/>+ PMR</b>                | <b>3450 places<br/>30 places</b> |