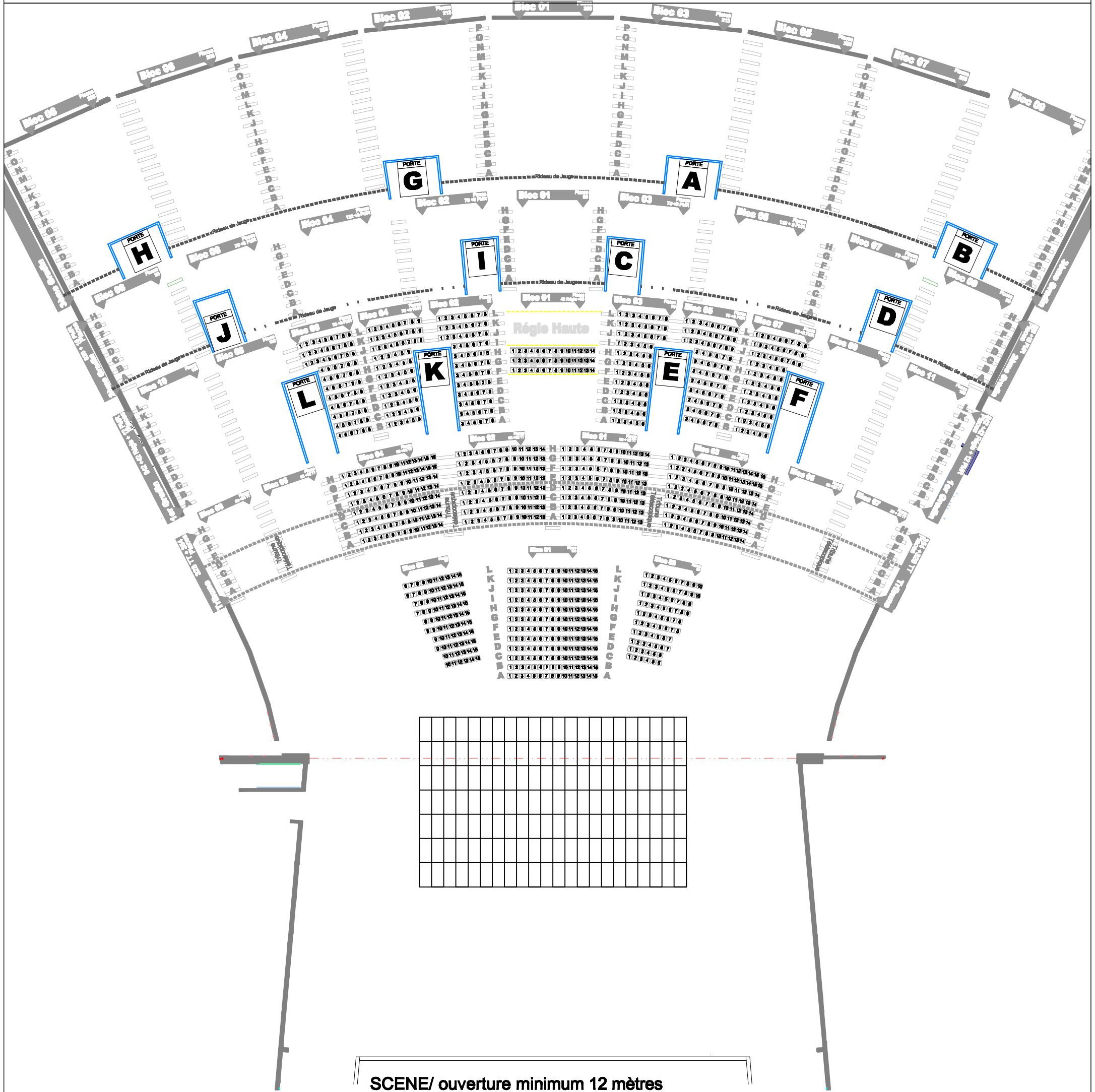


# CONFIGURATION / THEATRE 3



SCENE/ ouverture minimum 12 mètres

|  |                                  |
|--|----------------------------------|
| Parterre:  | 340 places                       |
| Tribune:   | 442 places                       |
| 1er gradin, blocs 2 à 7<br>+ bloc 1/ rangs F.G.H.:<br>+ 12 PMR | 498 places<br>12 places          |
| <b>Total commerciales<br/>+ PMR</b>                            | <b>1280 places<br/>12 places</b> |